



GLOBAL  
LEARNING  
COMMUNITY

**2021**

---

**QUARTER 1**

**SUMMARY REPORT**

# CONTENTS

Introduction \_\_\_\_\_ 1

2020 GLC Evaluation Findings\_\_ 2

## Outputs and Outcomes

Objective 1: Connections \_\_\_\_\_ 4

Objective 2: Learning \_\_\_\_\_ 5

Objective 3: Equity Partner \_\_\_\_\_ 6

Objective 4: Secretariat \_\_\_\_\_ 7



# INTRODUCTION

---

The first quarter of 2021 was a pivotal time for the Global Learning Community (GLC) to revisit and redefine the identity of the project by the community. Considerable time and discussion was given to understanding the culture of the project and its members to ensure the key values of the project were carried on. The next phase of the development and restructuring of the GLC has also been guided by the findings of the 2020 evaluation.

---



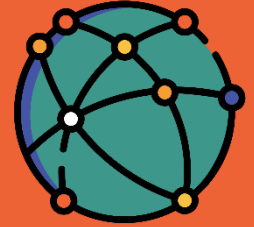
## ACCOMPLISHED KEY FINDINGS OF THE 2020 EVALUATION ARE AS FOLLOWS:

- Included participant introductions and breakout rooms in the Community Calls to
  - facilitate peer relationships and collaboration
- Scheduled Community Calls from January until July 2021
- Hired a monitoring, evaluation and learning consultant to assist with implementing changes
- Updated with community participation the mission, vision and core values with consideration for external communication
- Identified and recruited GLC members to contribute knowledge and experience on improving organisational standards and policies and survivor
  - empowerment and leadership



# **QUARTER 2: OUTPUTS & OUTCOMES**





# OBJECTIVE 1:

To inform, support and facilitate member development and connections within the anti-trafficking community, partners and external stakeholders

**3** **Community calls** were facilitated by the Secretariat, focussing on designing the future of the GLC and mitigating harmful practices

**78** **Members attended** three community calls

On average,

- 13** **GLC members** attended each call.
- 9** **countries** were represented in each call
- 10** **organisations** were represented in each call.

**15** **New members** joined the GLC



On average,

- 17** **Meetings/connections** per quarter were conducted by the Secretariat to **support GLC members** in their unique needs/goals
- 9** **Resources** (toolkits /research /articles /etc) were **shared** with individual member organisations per quarter





## OBJECTIVE 2:

To establish Learning Hubs and Community Projects that provide technical assistance and support for GLC members

**5**

**GLC Community Projects identified** via membership input

### GLC Community Projects:

- Survivor empowerment and leadership working group
  - Mitigating harmful practices working group
  - Creating a coalition and network resource library
- Creating a People Library of GLC members' competencies
  - A GLC member directory





## OBJECTIVE 3:

Equity Partners - To facilitate peer learning, coaching, connections and leading projects through a commitment of time equal to 20% of their work week 'sweat equity' contributions

10

applications for Equity Partnership are in the confirmation process

- A **Collaboration Agreement** was **drafted** in consultation with Thomson Reuters Trust Law by Sharon Jacques, Operations and Development Director of Chab Dai







## OBJECTIVE 4:

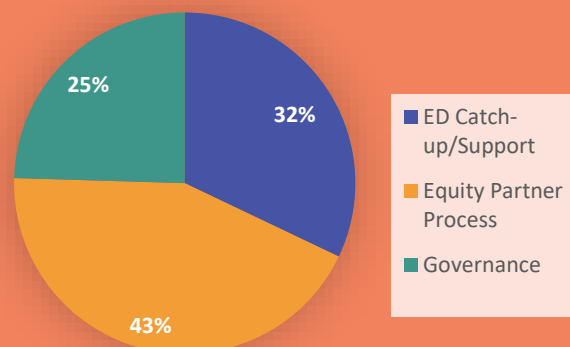
To oversee and implement the administrative functions as the GLC secretariat

- Purchased a **domain name** and launched the **GLC Google workspace**
- Designed and reached **community consensus on a logo**
- Reached **member consensus on the updated vision and mission**

**Secretariat activities** (calls, emails, and resource sharing) were focused on the following **key thematic areas**:

| Q2 Thematic Areas for Secretariat Activities |     |
|--|-----|
| ED Catch-up/Support                          | 17% |
| Equity Partner Process                       | 23% |
| Governance                                   | 13% |

**Q1 Thematic Areas for Secretariat Activities**

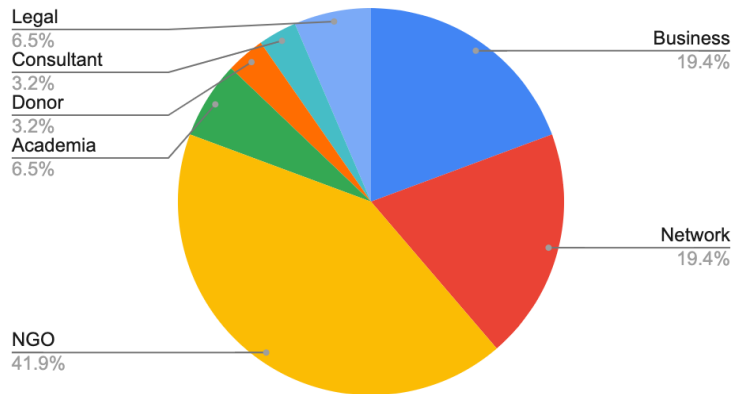




# OBJECTIVE 4:

**Secretariat activities** through connections, resource sharing and presentations were **primarily connected to NGOs**:

Sectors represented in Secretariat Activities Q1 (n=28)



**Secretariat activities** through connections, resource sharing and presentations were **primarily connected to members working in globally focused organisations and European organisations** (see chart below):

Regions represented in Secretariat Activities in Q1 (n=29)

